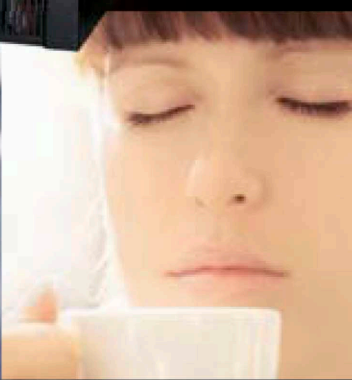
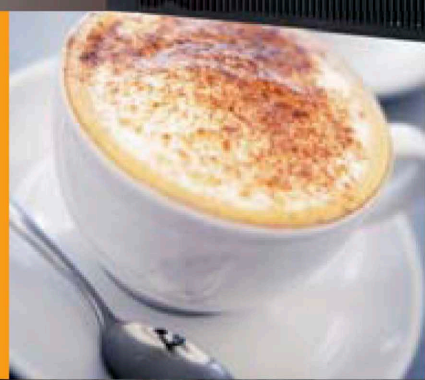
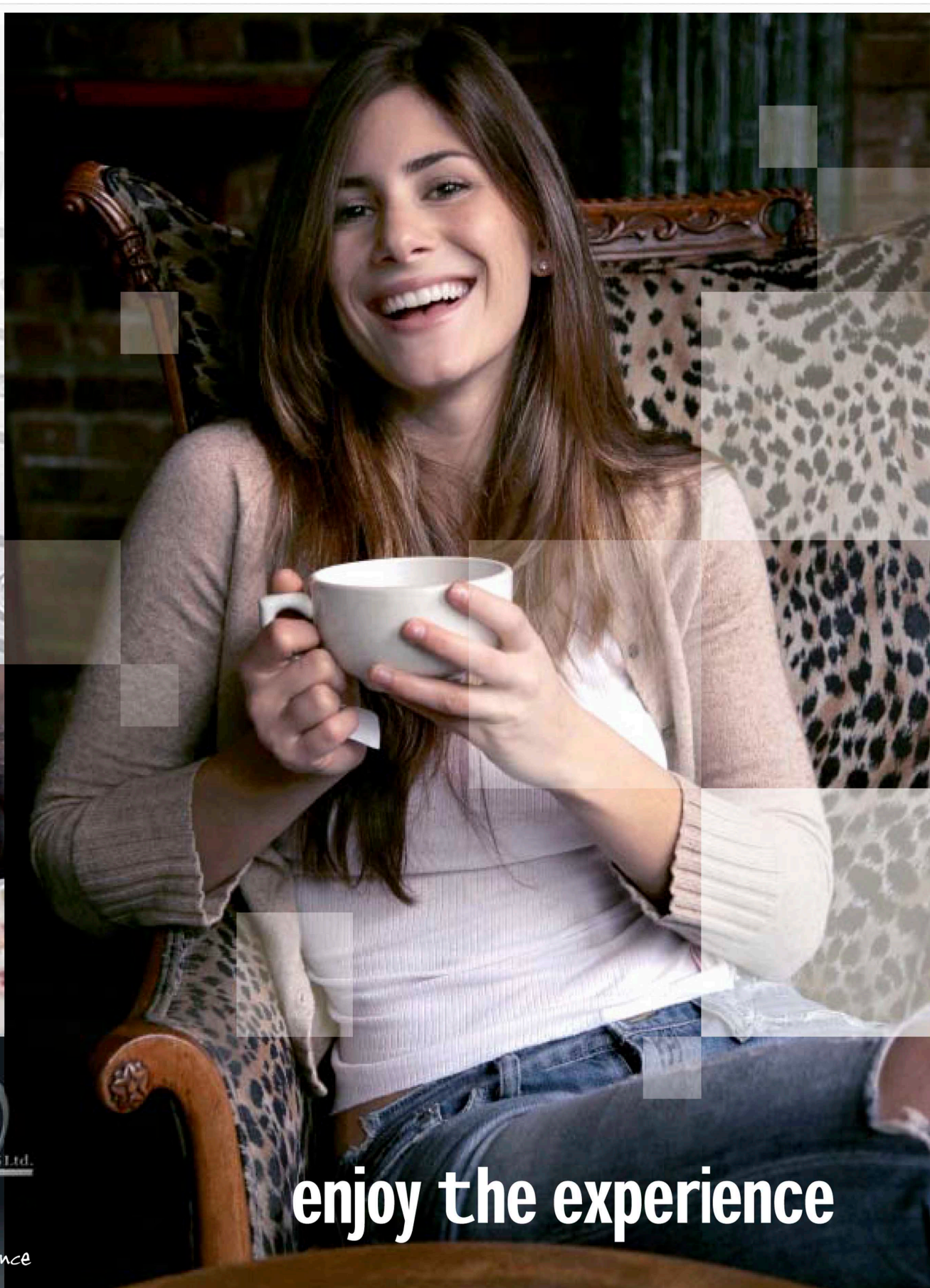




The
REFRESH
1400



enjoy the experience

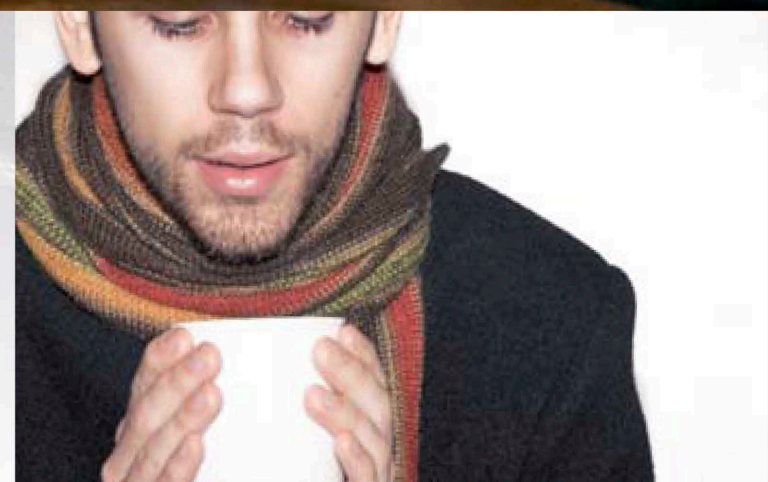
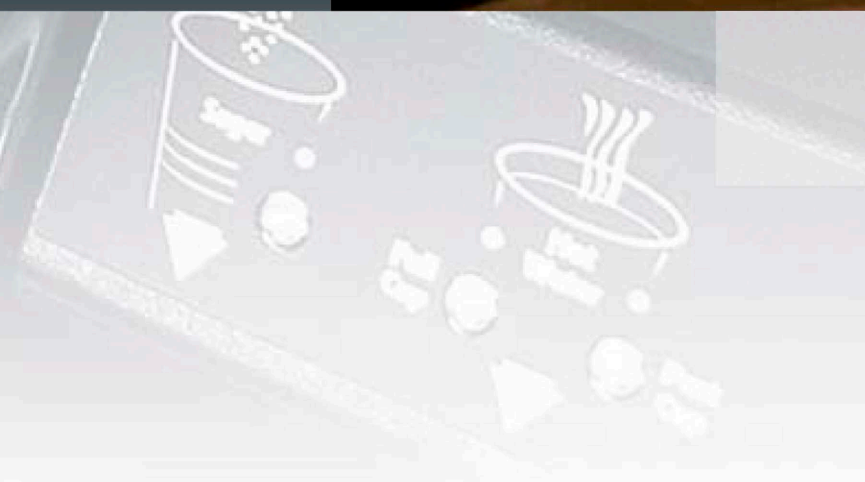


enjoy the experience



DarenthMJS Ltd.

enjoy the experience



The **REFRESH** 1400

The "Gold Standard" for total convenience and cost effective vending, the all new Refresh 1400 is designed to satisfy today's demanding user with a delicious array of hot and cold beverages.

Despite its unrivalled, market leading capacity in excess of 1400 cups, this superbly engineered machine occupies just 0.4 square metres of floor space.



Refresh 1400 presented in Nestle Gold Blend livery



Refresh 1400 presented in optional Kenco livery

DRINK SELECTION

The incredible Refresh 1400 offers a market leading choice of up to 15 primary drink selections (10 in-cup based drinks + 4 syrups and a further drinking water selection). Further taste options of sugar, hot/cold, refrigerated cold and even carbonated water can be made available to enhance user choice, or alternatively the machine can be programmed to automatically prepare and deliver the chosen drink following just the push of one button.



Refresh 1400 partnered with the full size SnackBreak - offering a wide range of hot and cold drinks, together with an extensive choice of snacks, crisps, confectionery, PET bottles and *ice cold* cans. The ideal "pick me up" station.

Refresh 1400 featuring new silver door panels, partnered with the new IceBerg rehydration station - providing the ultimate liquid refreshment centre - including a superb choice of flavoured, still and sparkling Brita filtered, UV purified water.

OTHER FEATURES

Fully automatic cup transfer mechanism collects the chosen drink from the huge capacity storage area and delivers it effortlessly to the illuminated cup station where water is added.

Electronically controlled, self opening and closing cup station door ensures both security and safety whilst a drink is being prepared.

Cold drinks can be served in differing cup sizes and styles - ideal for larger portions and enhanced presentation.

Incredibly user friendly, unrivalled capacity, fully automatic, robust and dependable floor standing machine.

High capacity sugar container fitted as standard (7.5ltr).

Optional syrup based cold drink system together with high capacity cooler or cooler/carbonator combination to satisfy high throughput requirements.

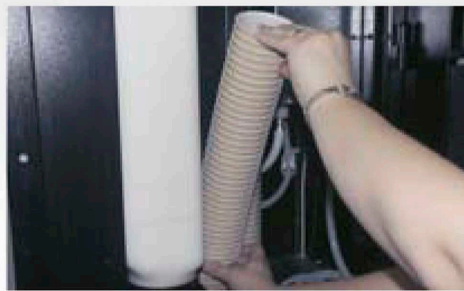
The Refresh 1400 by DarenthMJS is the ultimate solution for convenient and cost effective higher volume drinks management. Offering an extensive menu of up to 15 delicious hot and cold drinks, including totally refreshing carbonated varieties (if required), this feature packed yet exceptionally compact market leading machine takes the "gold medal" every time.



Optional syrup-based delicious cold drinks with still/sparkling selections



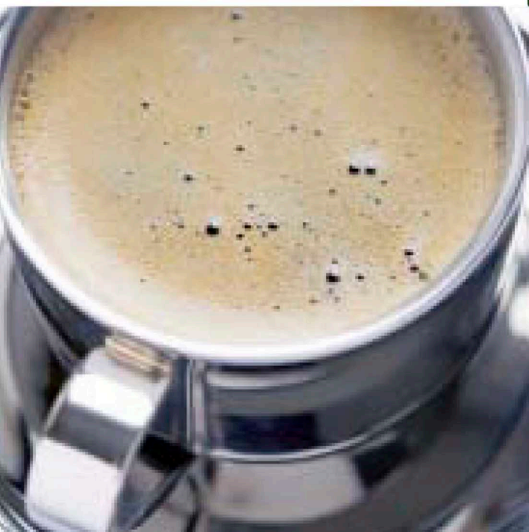
Cold drinks can be served in differing size and style of cup to enhance presentation



In-cup system delivers delicious tasting drinks and is incredibly simple to clean and refill

The Refresh 1400 is available in a range of colours, graphics and branding options. Please ask your DarenthMJS authorised dealer for latest details.

The
REFRESH
1400



TOTAL DESIGN & MANUFACTURE

DRINKS MENU AND CAPACITY

Selections:

10 In-cup drinks with electronic sugar dispenser.
Optional chilled or carbonated cold water system.
Up to 4 syrup based cold drink selections, plus additional drinking water option (still or sparkling).

Capacity:

In-cup (please specify 71,73 or 76mm)
88 cups per selection = 880 cups total.
With capacity upgrade = 1280 cups total
(increased capacity on top 5 selections).

Empty cups for cold drinks:

220 cups.

Syrup:

4 x 5ltr bottles.

Sugar:

Super high capacity (7.5ltr) fitted as standard.

WATER REQUIREMENTS:

Mains water connection via 3/4" BSP fitting
(connection hose available).

Mains water pressure 1.5 - 10 bar (0.15 Mpa - 1Mpa).

POWER REQUIREMENTS:

220-240 V, 50 Hz, single phase.
2.5 KW (2.8 KW with chiller), 13 A plug fuse.
Machine fitted with 2.5 metre mains lead.

DIMENSIONS (WxHxD):

Machine: 610mm x 1850mm x 650mm

WEIGHT:

Machine: 160Kg

Machine (with optional water chiller): 185Kg

COIN CONTROL

Available as either a free vend machine, or with full electronic coin mechanism which accepts all coins and token, or with full change-giving facility.

Plain English, high visibility, alphanumeric liquid crystal display.

Free vend master override switch.

I-Key cashless payment system compatible.

Electronic interface facility to host partner machines.

OPTIONS

In-cup capacity upgrade adding another 400 cups, making a huge total of 1280 in-cup products.

Empty cup dispenser for cold water based drinks.

Chilled cold water system.

2 or 4 additional syrup based drink options.

Carbonation system to produce deliciously refreshing sparkling cold drinks.

CO2 low pressure sensor.

Illuminated and customisable machine identity panel.

Full sized SnackBreak offering up to 40 selections of snacks, crisps, confectionery and PET bottles plus an additional 4 selections of *ice cold* cans.

IceBerg rehydration station, to provide the ultimate liquid refreshment solution made from Brita filtered and ultra violet purified water.



For further information and advice on the extensive range of total refreshment solutions manufactured by DarenthMJS Limited, please contact your local authorised dealer.



DarenthMJS recommend and supply the complete range of EVERPURE water filtration technology.



DarenthMJS Ltd have a policy of continual improvement and reserve the right to modify and/ or change specifications without notice.

All dimensions and capacities shown are approximate and for guidance only. E & OE.

